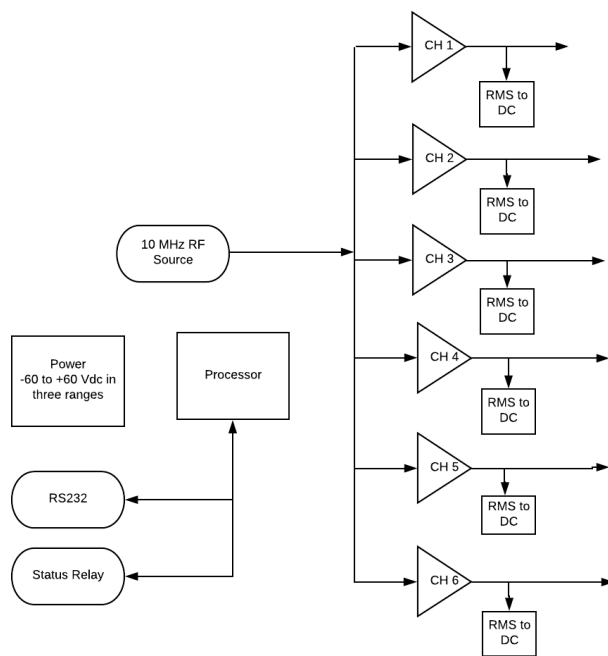


DATA SHEET	NR3626-O
REVISION	B
DATE	11-02-18

NR3626-O

Six-Channel 10 MHz OCXO Frequency Reference

KEY FEATURES



The NR3626-O is a high performance 10 MHz frequency reference that is driven by a low phase noise SC cut OCXO. The basic platform integrates a versatile distribution amplifier. The 10 MHz outputs are 13 dBm while the PPS output can be 5 or 3.3 Volt logic levels with the capability of driving a 50 Ohm load.

Product Highlights



Six Channels

Six transient and fault protected channels.

Flexible Power

Versatile Power- -60 to +60 Vdc

Low Phase Noise

Phase Noise	
Offset	dBc/Hz
10	-125
100	-140
1K	-145
10K	-150

DATA SHEET	NR3626-O
REVISION	B
DATE	11-02-18

Technical Specifications

10MHz sine	13 \pm 2 dBm ,50 Ohm - BNC
Harmonics	Less than -30 dBc
First year frequency stability	\pm 50 ppb
Temperature stability	\pm 10 ppb
Yearly aging	\pm 50ppb
PPS-Option	Single channel derived from the 10 MHz- rear panel SMA
Power requirements	Standard configuration is 12VDC (9 to 15VDC) Options - \pm 24VDC (20 to 30VDC), \pm 48VDC (40 to 60VDC) AC adapter available 100 to 240VAC, 50/60Hz
Connectors	BNC 10 MHz output BNC 10 MHz input BNC PPS (3.3 VDC CMOS)
Power connector	4-pin power connector - power in. Mates with On Shore Tech OSTTJ0411530

Environmental and Mechanical

Operating temperature	0 to 50°C non-condensing (extended temperature range available)
Storage temperature	-40 to 70°C
Width	6.0"
Depth	6.0" (exclusive of connectors)
Height	1.58 "
Weight	~16 oz.

This document is copyright © November 6, 2018 Novus Power Products LLC. All rights reserved. This document is provided for information purposes only; contents are subject to change without notice. It is not warranted to be error-free, nor subject to any other warranties or conditions including implied warranties and conditions of merchantability or fitness for a particular purpose.